



Technology Assessment



Technology Assessment 101

WHAT IS A TECHNOLOGY ASSESSMENT?

A technology assessment is an opportunity for any organization at any level to get a clear picture of current IT practices and vulnerabilities. This is important for developing a baseline to measure all future mitigating efforts.

The process is simple. Once we have a quick kick off, we hook up a small computer to your network and run a scan over the course of one day - providing a thorough assessment with minimal interruption.

WHO NEEDS A TECHNOLOGY ASSESSMENT?

1. Do you have any employees who work remotely, either full- or part-time?
2. Do you have customer data?
3. Do you store important company or employee information on computers, servers or in the cloud?
4. Are you concerned about an unexpected data breach or cybersecurity event?

If you answered "yes" to any of the questions above, we recommend your organization consider a technology assessment. We can act as an independent check on your current internal or external IT partners, or build a new managed IT partnership. We believe it is critical to get a clear picture of your current IT practices and vulnerabilities to develop a baseline to measure all future mitigation efforts against.

ONCE THE ASSESSMENT IS COMPLETE, WHAT'S NEXT?

Regardless of whether you work with our company, your internal team, or an external IT partner, you will receive the same assessment. Based on these reports, we will provide preliminary recommendations for actions your organization can take to help secure your data. If you choose to continue to work with us, this will be the first step in developing our strategic IT plan. Additional, ongoing assessments can be completed quarterly to ensure progress is being made against any security concerns.

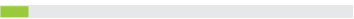


Technology Assessment Process

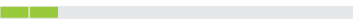
INTRODUCTION

We begin every engagement by designing an approach to meet your needs. Our assessments can be tailored based on whether your organization needs one-time reassurance, a thorough strategic IT review, or somewhere in the middle.

1. Kick-off call or meeting



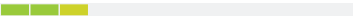
2. Complete infrastructure survey



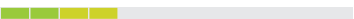
DATA COLLECTION

Our process is designed to be easy for even a non-IT staff member to help complete. We will be there to help you with any questions or needs. This stage should take no more than one week from start to finish.

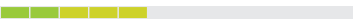
3. Receive and connect computer to network



4. Xamin runs complete scan



5. Return computer in provided packaging



ANALYZE CLIENT SECURITY

Each organization will receive multiple tailored reports. This analysis is easy to understand and will provide a clear picture of security or technology concerns to be addressed.

6. Risk summary



7. Security scorecard



8. Microsoft 365 security review



9. Additional reports



RECOMMENDATIONS

As part of the assessment we will provide clients with an executive summary, including any mitigation steps. We provide this regardless of your current IT partners or whomever you work with in the future.

10. Complete assessment report



11. Share all documents



12. Review meeting





Ongoing Assessments

Our technology assessment examines your security controls and how they stack up against known vulnerabilities and industry best practices. These risks continuously change and evolve over time. As such, we strongly recommend each of our clients completes quarterly assessments to measure progress against an initial baseline, and ensure continued protection.

1

Security Baseline

We hope to begin any engagement with a baseline assessment to guide our recommendations.

2

Ongoing Measurement

With a baseline in place, a regularly scheduled review can identify concerning trends or opportunities.

3

Assess and Adjust

An ongoing assessment allows an organization to take a proactive and timely approach to security.

About Xamin

Founded in 1999, Xamin provides managed IT solutions and support including infrastructure, security, data protection, cloud, and other IT related professional services. We work with organizations in multiple industries including financial, healthcare, legal, accounting, manufacturing, construction and others.

Organizations face many risks, from remaining compliant amid ever-changing regulations to preparing for disasters, safeguarding against cyberattacks, and keeping their remote workforce productive & secure. With organizations facing heightened risks, companies need a security-focused managed IT services team on their side.

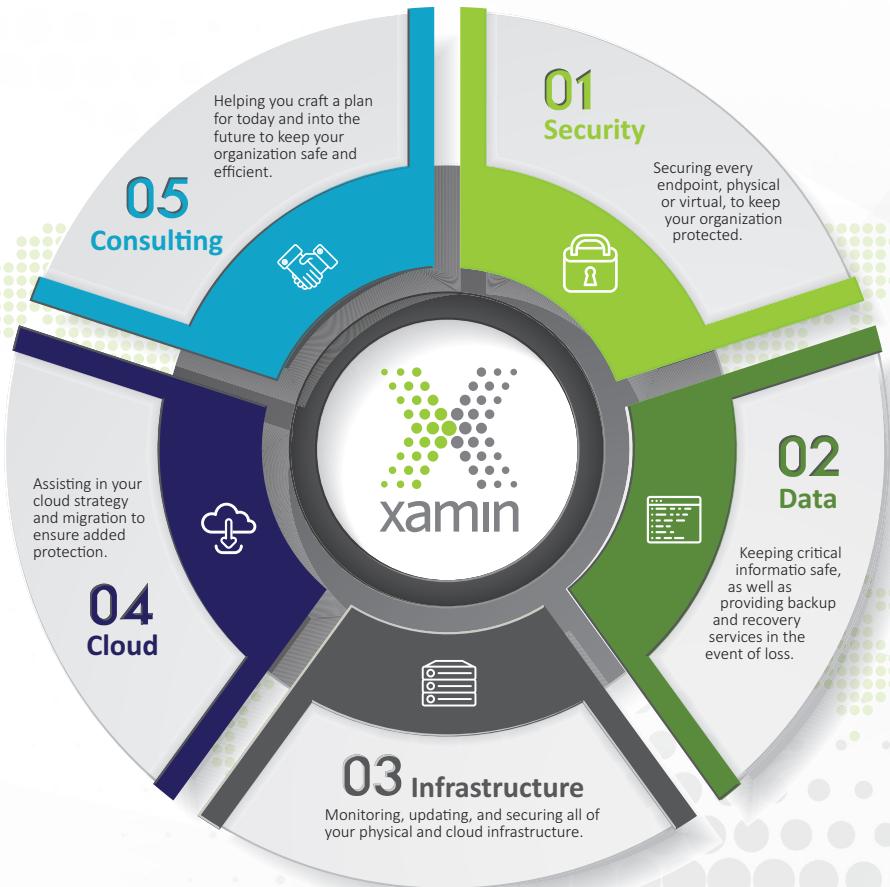
In August of 2020, Xamin joined forces with Mowery & Schoenfeld. Xamin operates as a subsidiary of Mowery & Schoenfeld and Jonathan Smith, founder of Xamin, continues to lead the Xamin team and is a partner of Mowery & Schoenfeld. Both share core values of superior client services and a focus on our teams. This merger allows each business to focus on what they do best individually – as a top accounting firm and SOC 2 certified technology company – while increasing reach, resources and offerings.

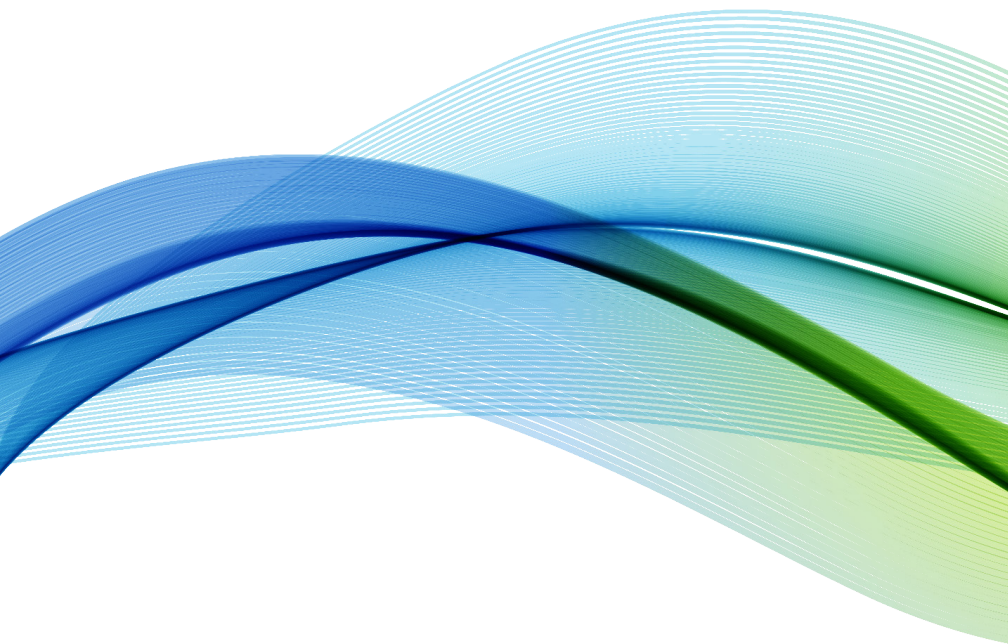
Xamin provides a full suite of technology solutions. Unlike other service providers, Xamin is a SOC 2 certified company in the trust principles of confidentiality and security, which requires an annual third-party audit.

Today's technology is ever-changing, which is why Xamin is constantly evolving to improve partnerships, strategy and solutions. The company differentiates itself by investing deeply in its white glove advisory approach, and always provides versatility.

Our Services

We focus on helping clients solve problems each day. While we strive to always maintain our personal touch and entrepreneurial spirit, our services must also be specialized to meet the needs of our clients. We provide comprehensive managed IT services, focused on security and designed for each individual client. We work with organization of all sizes in diverse industries.





p (844) 449-2646
f (847) 883-8704

xamin.com mslc.com
@xamininc @msllccpas

475 Half Day Road, Suite 500
Lincolnshire, IL 60069

311 S. Wacker Drive, Suite 2650
Chicago, IL 60606